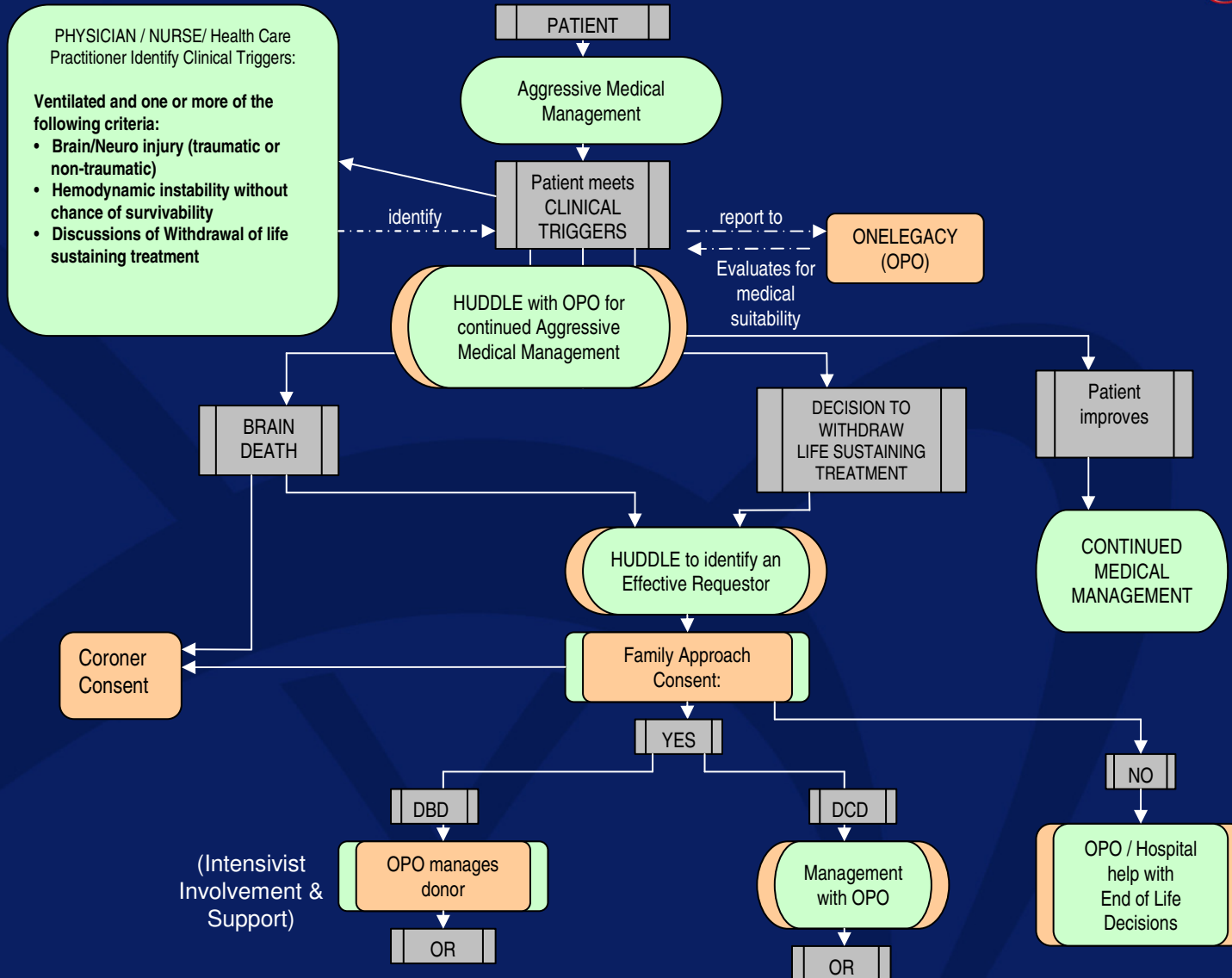


PHYSICIAN DONATION PROCESS ALGORITHM



Green = identifies physician involvement. Orange = identifies OPO involvement. If box is predominantly green the physician / hospital takes the lead with OPO back up. If the box is predominantly orange, the OPO takes the lead with hospital support.
 OPO = Organ Procurement Organization; OR = Operating Room; DBD = Donation after Brain Death; DCD = Donation after Cardiac Death; Huddle = Multidisciplinary Care-Planning Meeting

